



GSLEP Program Update India

Steering Committee Meeting

Rakesh Kumar Jagenia
Deputy Inspector General of Forests

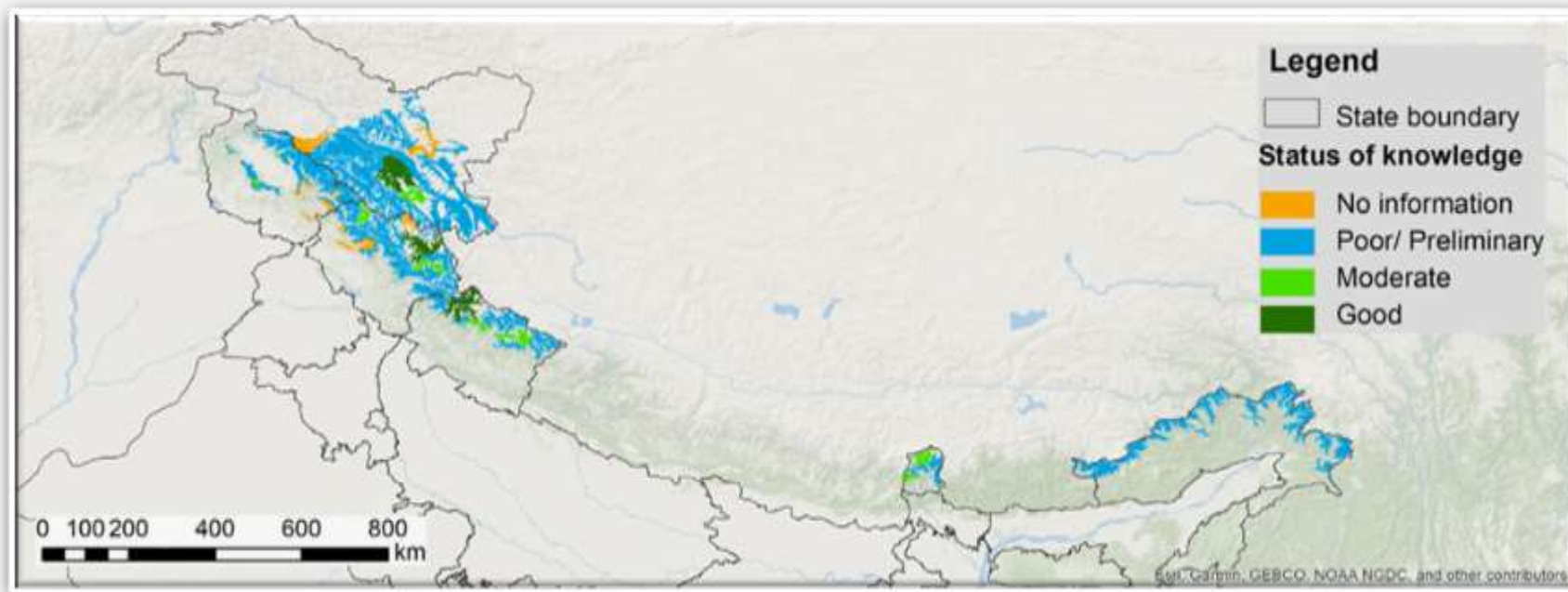
Ministry of Environment, Forest and Climate
Change, Government of India

Samarkand, Uzbekistan

11 February , 2024



Status of knowledge on snow leopard and prey species in India



State	State's Area (km ²)	Potential Area Under PSL (km ²)	Percent Geographical Area Under PSL
Jammu & Kashmir * & Ladakh	128,534	77,833	61
Himachal Pradesh	54,975	27,846	51
Uttarakhand	59,846	13,885	23
Sikkim	8,318	3,031	36
Arunachal Pradesh	81,174	6,162	8
Total	3,32,846	1,28,757	39





Project Goal

To safeguard India's unique natural heritage of high altitude wildlife populations and their habitats by promoting conservation through participatory policies and actions

Implementation Status

- Year of launch: **2009**
- Promotion of **inclusion and participatory Approach**
- Inclusion of **communities, conservationists, conservation scientists, CSOs**
- **Support to wildlife managers**, particularly for landscape level planning and management
- Strong network for **protection from poaching and illegal trade**
- Steering Committee for **monitoring the implementation of PSL**
- **Use of Technology** for Monitoring and Surveillance





Implementation status of the NSLEP (National Goals of GSLEP) – Project Snow Leopard



- **Landscape-level approach to wildlife conservation** – NWAP (2017-2031)
- **Rationalising and improving protected area** and their management – Protected areas and Eco-sensitive Zones
- **Species Recovery Program** supporting focused conservation for snow leopard and its prey
- Promotion of **stronger measures for wildlife protection and law enforcement** through Wild Life Crime Control Bureau
- **Capacity building programs** for better understanding and management of human-wildlife conflicts





Resource mobilization for NSLEP (National Goals of GSLEP)



Funds secured from:

- internal –
- Centrally Sponsored Scheme of Development of Wildlife Habitats - Recovery of Endangered Species programme, Development of Protected Area and Support Outside PA
- CAMPA
- external - SECURE HIMALAYAS - 72.36 million US \$

Financial gaps and needs: Based on the Annual Plan of Operations submitted by the Field Units

Future plans – Continued Support from the CSS – DWH, CAMPA, dedicated **SNOW LEOPARD CELL**





- Referring to the NSLEP, describe if any of the reported threats have changed over the years; Human Wildlife Conflict, feral dogs
- Status of the emerging threats such as climate change, mining, infrastructure projects in the snow leopard landscapes
- Proposed strategy to tackle emerging threats Management Effectiveness Evaluation of National Parks and Sanctuaries in the country, including the Protected Areas covering the Snow leopard landscape.





Implementation of PAWS protocols- Snow Leopard Population Assessment in India (SPAI)



State forest departments involved



Scientific institutions/ organizations involved



भारतीय वन्यजीव संस्थान
Wildlife Institute of India

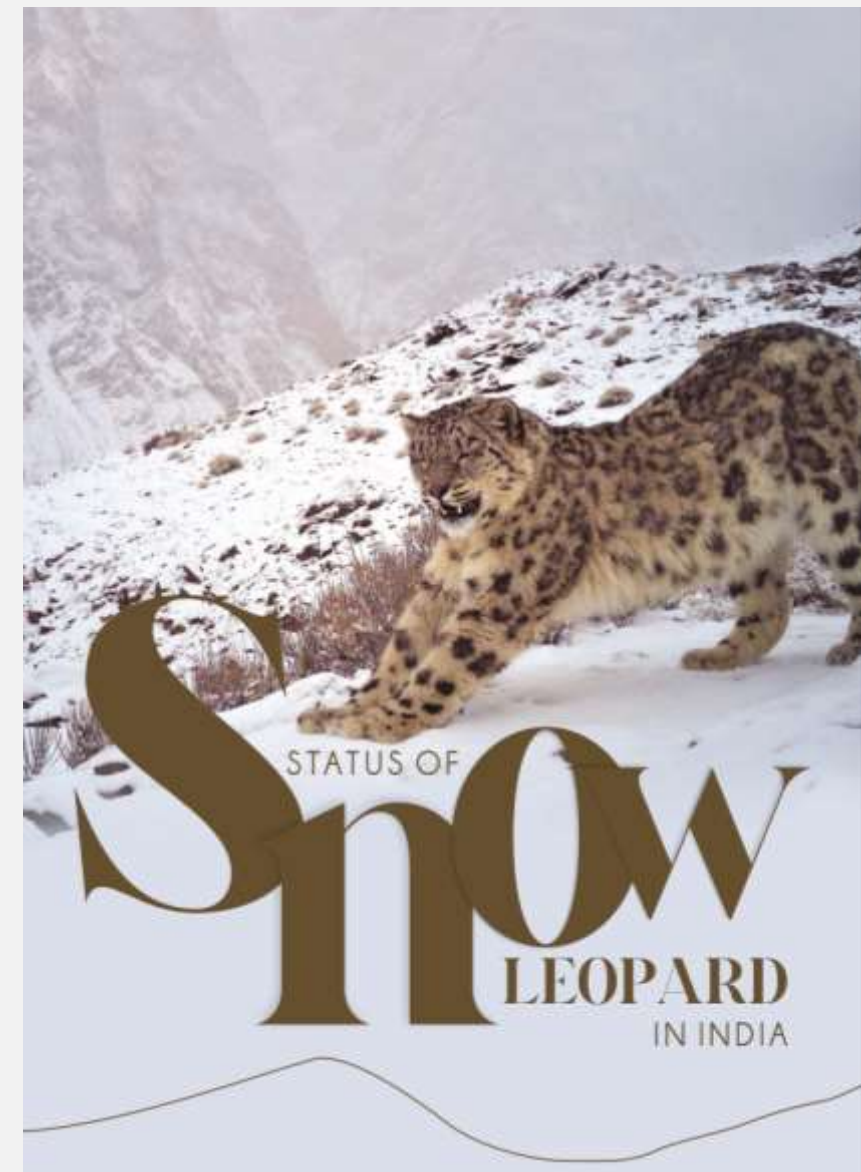


nature
conservation
foundation





Status of Snow Leopard in India Report



POTENTIAL SNOW LEOPARD RANGE IN INDIA
107,594 Km²

38,718 Km²
LADAKH

12,000 Km²
JAMMU & KASHMIR

26,112 Km²
HIMACHAL PRADESH

12,764 Km²
UTTARAKHAND

3,000 Km²
SIKKIM

15,000 Km²
ARUNACHAL PRADESH

CONSERVATION STEPS

3 GSLEP Landscapes
46,630 Km²

3 Biosphere Reserves
21,300 Km²

57 PAs covering 34% of Snow Leopard Range.



13,450 Km Trail surveyed to record Snow Leopard signs



Cameras deployed at 1971 locations, for 1,80,000 trap nights



Around 43,545 km² of effective area sampled for Snow Leopard occupancy, prey and habitat



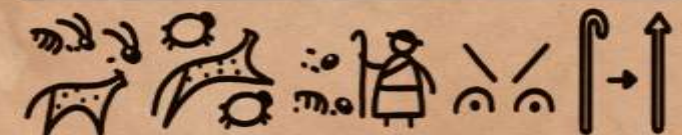
20.2 Lakh camera trap photographs, representing 196 species of birds and mammals



Snow Leopard occupancy recorded in 93,392 Km² and estimated presence in 100,841 Km²



241 unique Snow Leopard photographed. Population estimated to be 710 in entire occupied habitat of 93,392 Km²



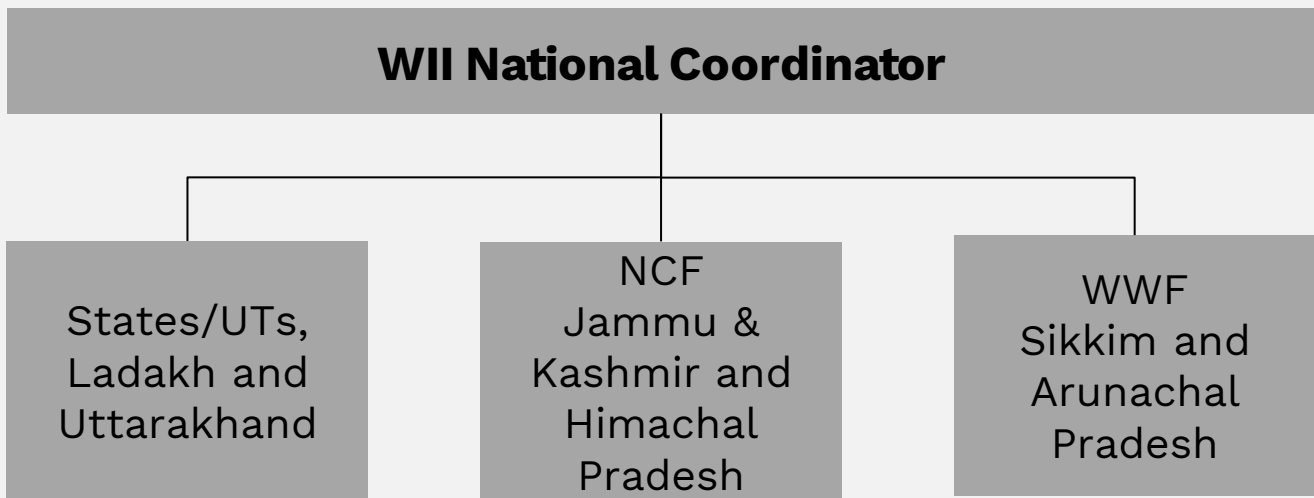
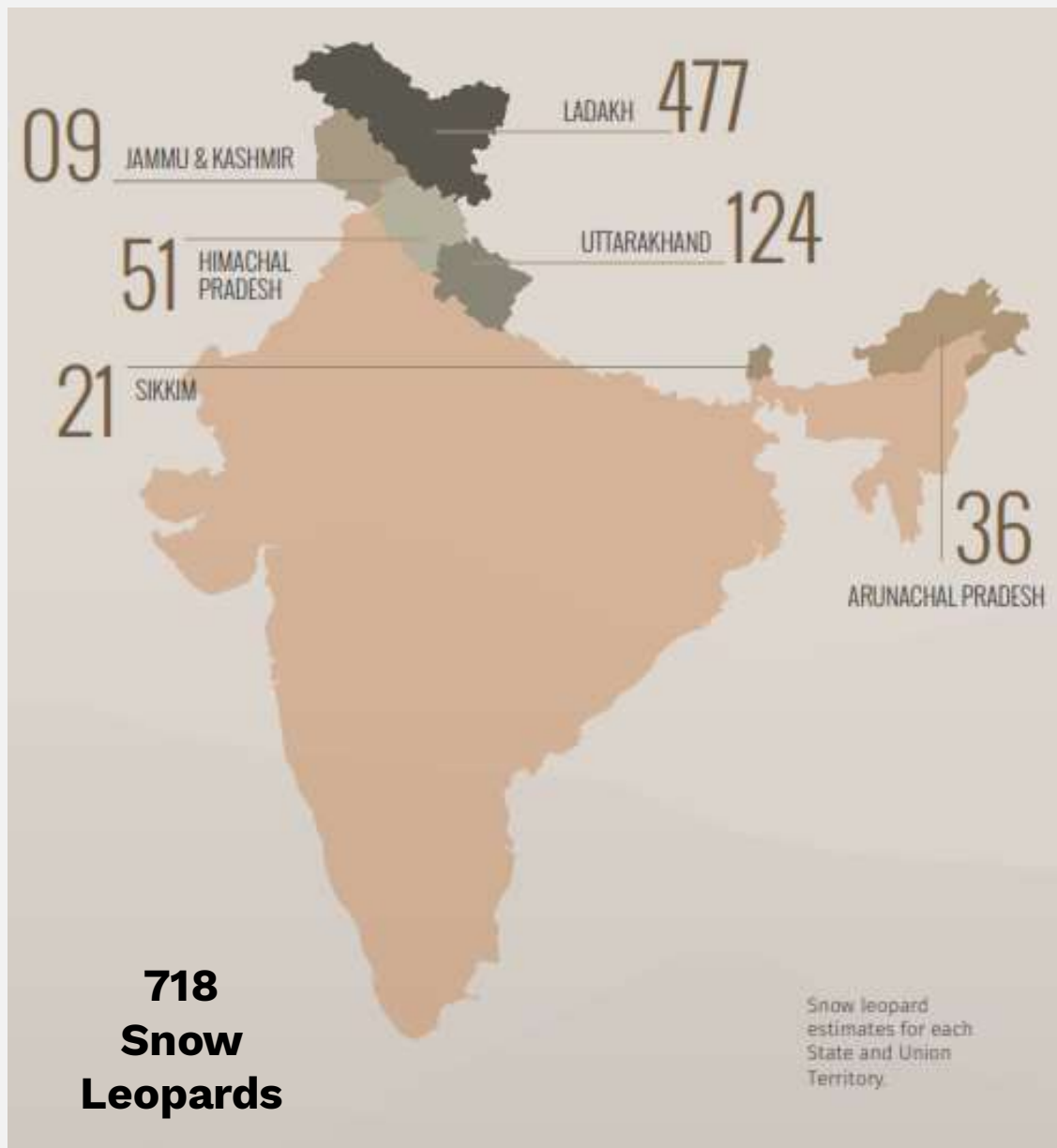
Snow Leopard Population Assessment in India

Population Assessment of World's Snow Leopards (PAWS) for India





Population Status of Snow Leopards



States Uts	No. of Camera Trap Locations	No. of Unique Individuals	Density Estimates	Estimated Number of Snow Leopards
Ladakh	956	126	0.34±0.14	477
Jammu & Kashmir	135	9	0.75±0.52	9
Himachal Pradesh	284	44	0.08-0.37	51
Uttarakhand	382	40	0.7-1.04	124
Sikkim	99	14	0.40±0.11	21
Arunachal Pradesh	115	8	0.26±0.11	36
Total	1971	241		718

SPAI exercise to be repeated every 4 years





Community-based conservation initiatives



- Ongoing or upcoming community-based conservation programs in the snow leopard habitats –
 - Guidelines on Ecotourism, Home Stays
 - Construction of corral pens, solar fencing, Animal Intrusion Detection and Repellent System (ANIDERS), bio-digester plant in Army Camps for management of solid waste and control of feral dog population, etc have been done, scaled up and replicated across the landscapes which have brought down the instances of HWC.
 - 65 Biodiversity Management Committees or BMC (21 in Ladakh landscape; 29 in Uttarakhand landscape; 35 in Himachal Pradesh landscape) have been constituted to promote the conservation, sustainable use and documentation of local biodiversity.
 - Conservation based livelihood activities, are being supported throughout the landscapes for e.g., nettle based enterprise in Sikkim, Uttarakhand, seabuckthorn in Himachal Pradesh
- Spatial coverage of the existing initiatives in relation to the snow leopard range in the country
- Resources secured
- Gaps and needs (technical and financial)





Mission life: Lifestyle for Environment entails:

- Strengthening campaign of solid waste management and freedom from single use plastic
- Water conservation wetlands, inside and in areas surrounding protected areas
- Experience based learning for conservation and protection of wildlife
- Carbon sequestration while planning developmental projects in and around protected areas

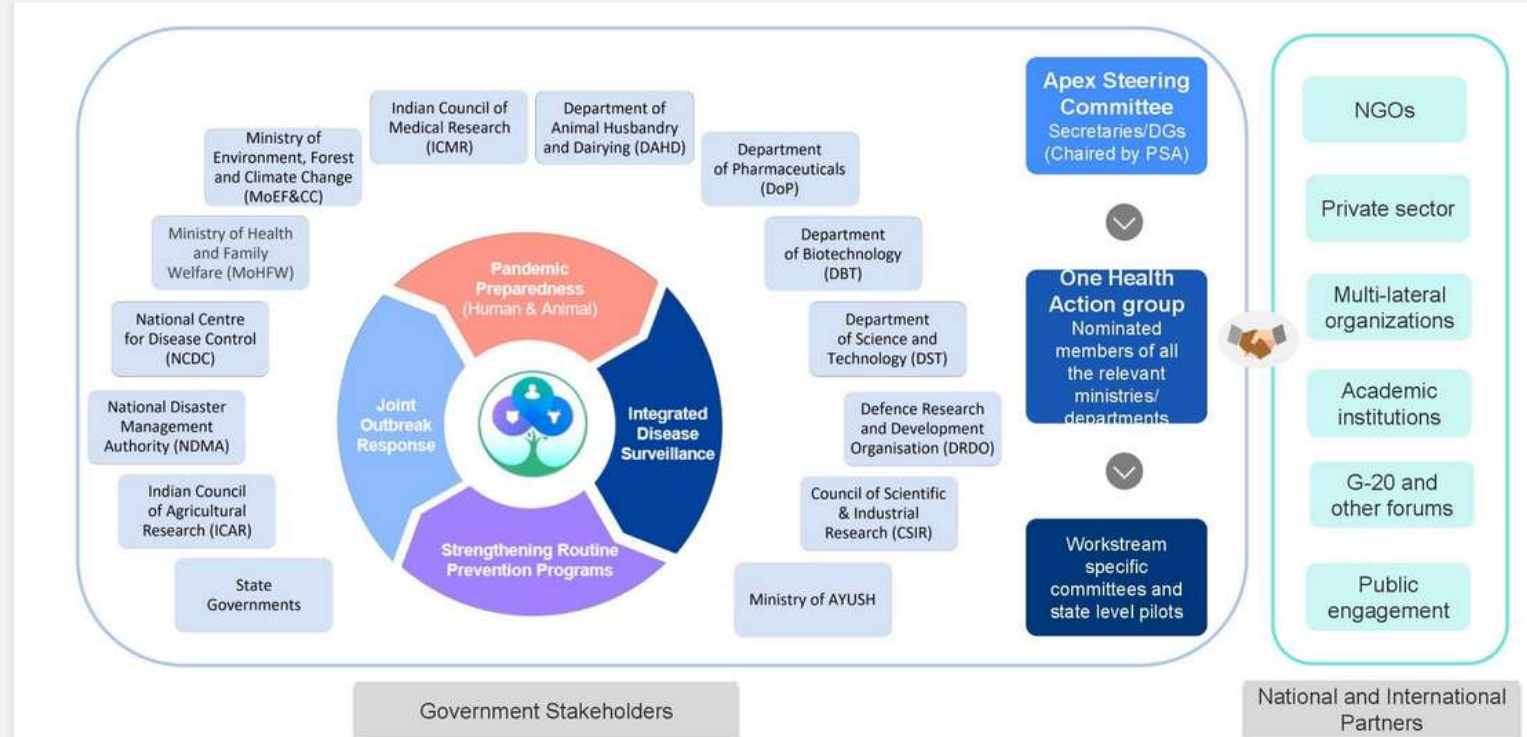




Management & monitoring of disease systems



- **On-going programs initiated to manage, monitor or research disease and/or disease spread in livestock and wildlife of the high mountain habitat**
- immunisation against communicable diseases of the live-stock kept in or within five kilometres of a sanctuary.
- No person shall take, or cause to be taken or grazed, any live-stock in a sanctuary without getting it immunised.
- Funding support under DWH
- **New programs being proposed to manage, monitor or research disease and/or disease spread in livestock and wildlife of the high mountain habitat – National Wildlife Referral Centre**
- Gaps and needs – Capacity Building

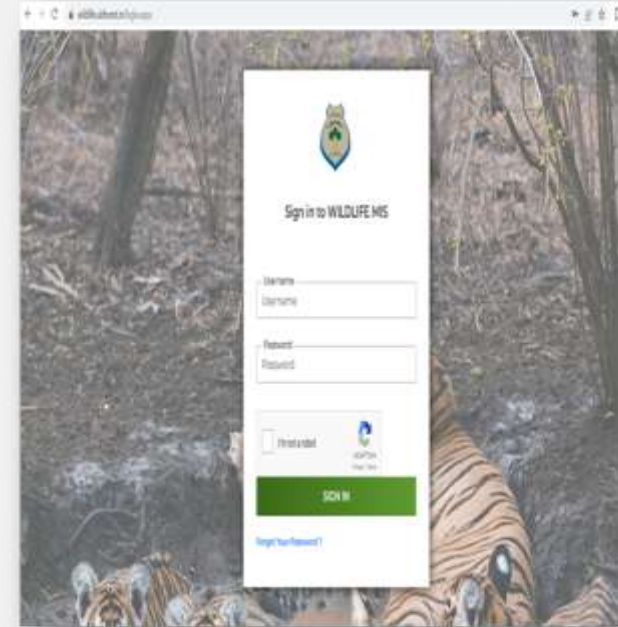
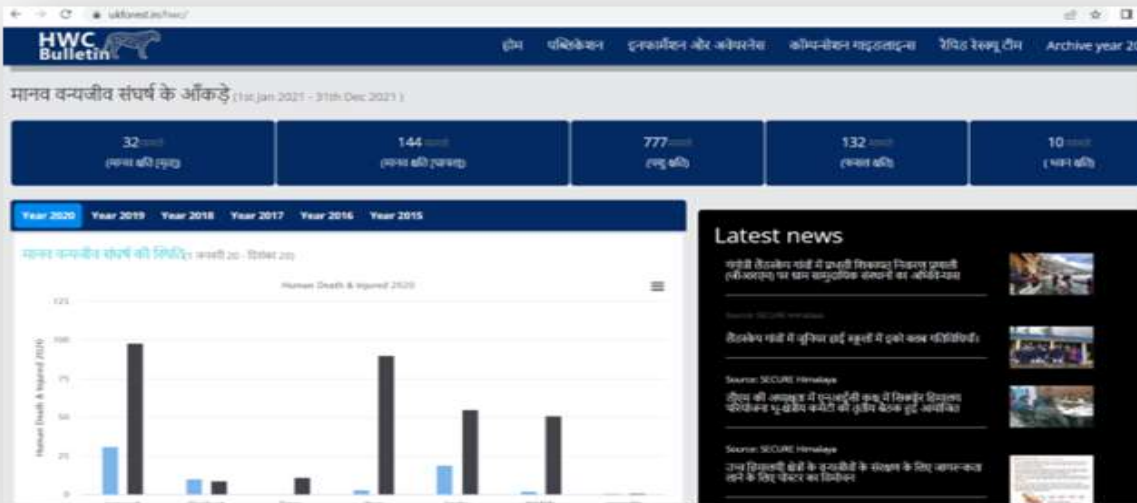


- **Disease gap prioritization exercise**
- **Mapping of existing surveillance programs**
- **Mapping of laboratory capabilities**
- **Mapping institutional capabilities**





Disrupting illegal wildlife trade in the country



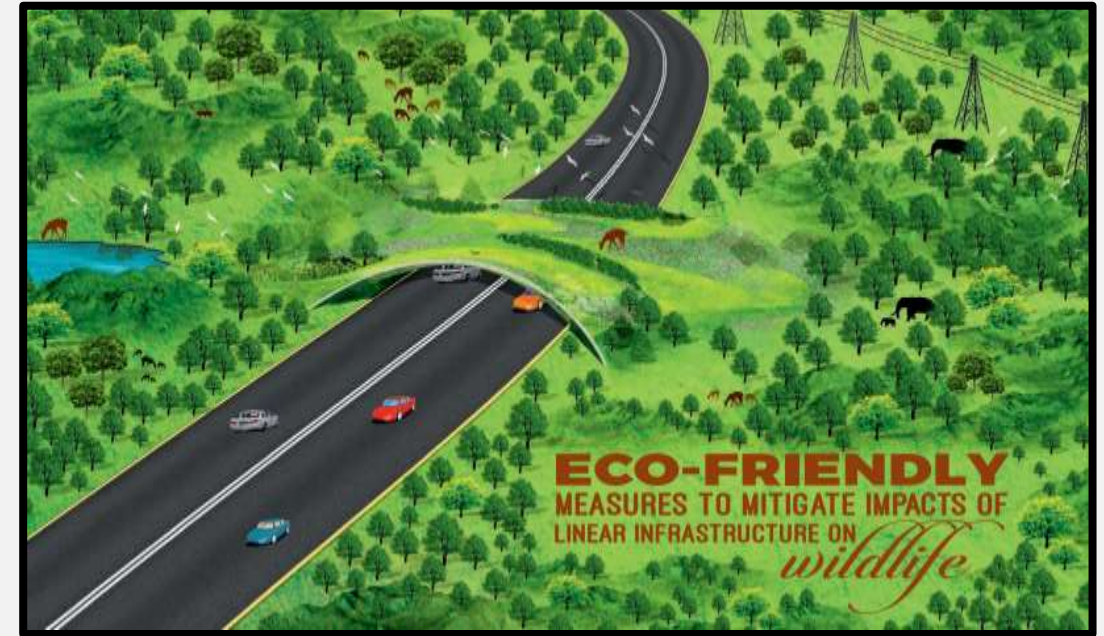
- Efforts made to disrupt poaching and illegal wildlife trade in snow leopard habitat
 - Capacity building of enforcement officers
 - Community volunteers have been engaged for monitoring and patrolling of wildlife habitats
 - identification of hotspots of illegal trade and wildlife crime pathways to support enforcement agencies.
 - National Helpline Number
- Number of snow leopard poaching/confiscation cases during the past one year - None
- Number of convictions (if any) – None
- Gaps and needs

State/UT	No of	
	program	No of officers trained
Himachal Pradesh	1	111
Jammu & Kashmir	1	93
Ladakh	0	0
Sikkim	0	0
Arunachal Pradesh	1	34
Uttarakhand	3	221
	6	459





- On-going policies, initiatives or projects being implemented to minimize and mitigate impacts of:
 1. Infrastructure – Road infrastructure – Linear Infrastructure guidelines, National Board for Wild Life
 2. Tourism in the snow leopard habitat
- Upcoming initiatives or projects - Revision of guidelines being undertaken
- Gaps and needs





- Developments in improving trans-boundary cooperation
- Launch of International Big Cats Alliance – 16 countries, several multilateral organisations
- MoU on Biodiversity Conservation finalized with Government of Nepal
- Meeting of the IUCN – APAP – Dehradun – April, 2023
- Capacity building of enforcement authorities of SAWEN through WCCB and WWF
- Gaps and needs: establishment of joint working groups and regular meetings





Thank You