



MINISTRY OF ENVIRONMENT
AND TOURISM



Snow leopard conservation in Mongolia

XIII Steering Committee Meeting, Samarkand, Uzbekistan

10-11 February, 2024

TS. URANCHIMEG

Director General, Natural Resource Policy Coordination Department, Ministry of Environment and Tourism

ᠰᠡᠨᠠᠭ ᠤᠯᠤᠰ ᠤᠯᠤᠰ
ᠮᠣᠩᠭᠣᠯᠢ ᠤᠯᠤᠰ
ᠤᠯᠤᠰ

Snow leopard-*Panthera uncia*

Globally:

IUCN Red list- Vulnerable C2a1

CITES -Appendix-1

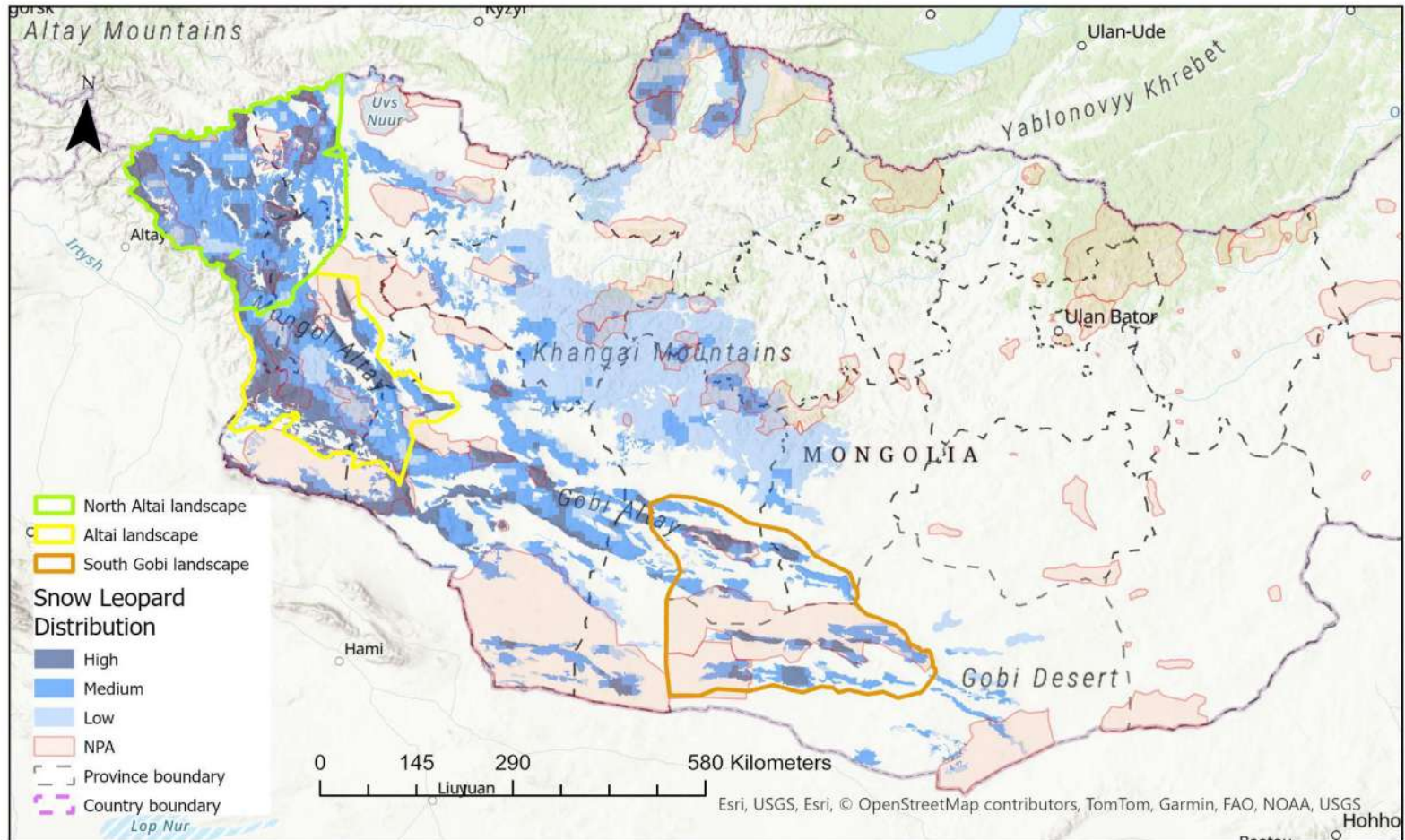
CMS-Appendix-1

Nationally:

Law on Fauna- Endangered

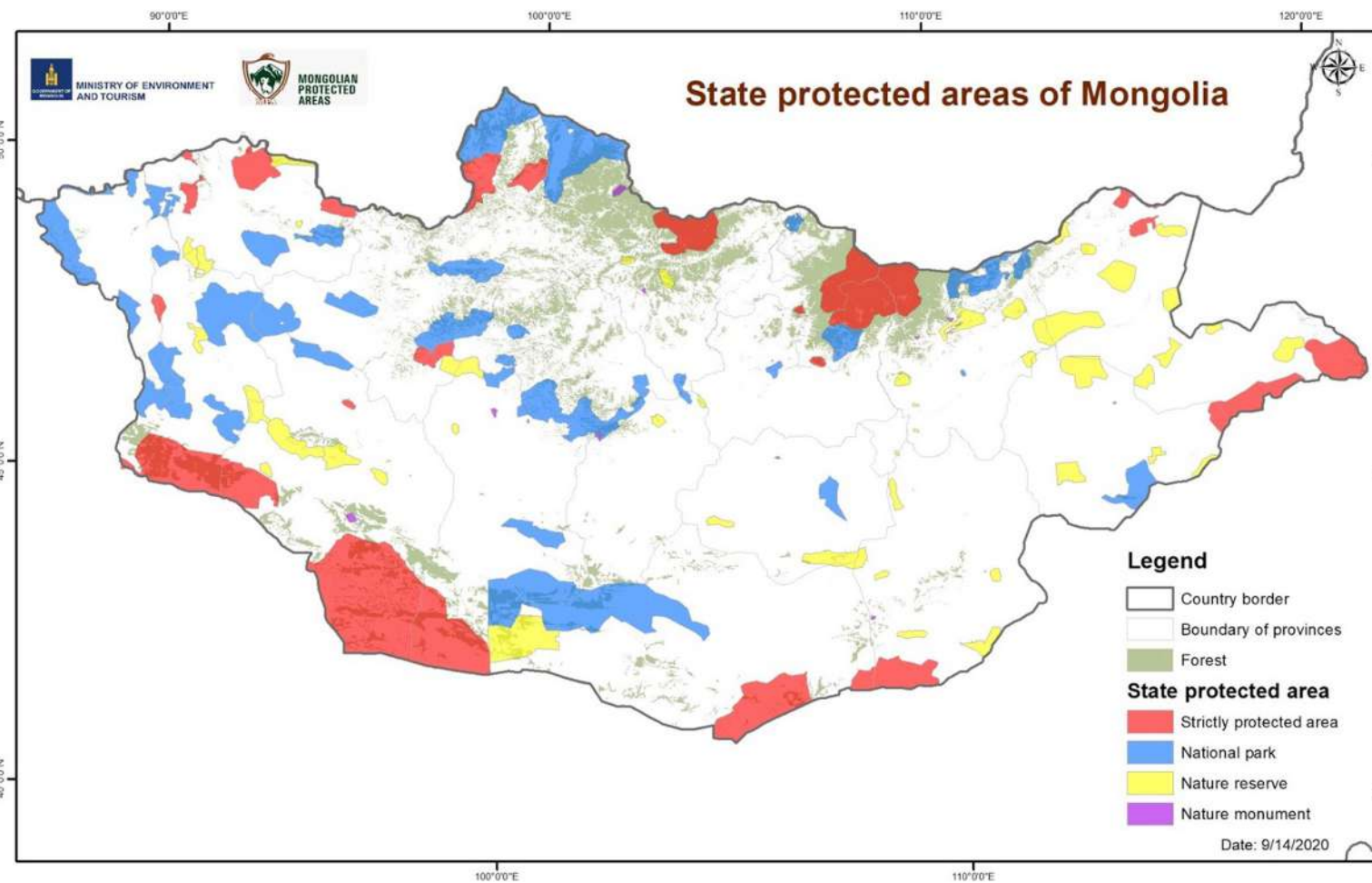
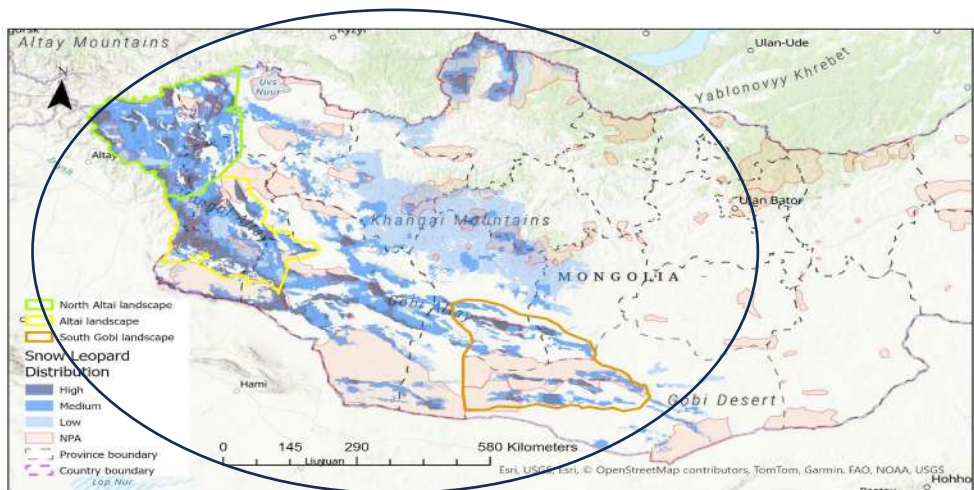
National Red list data-EN C1

National Redbook- Endangered



Protected areas in Mongolia.

SL habitat



Main threats of Snow Leopard in Mongolia

1. Climate change impacts, increasing frequency and intensity of dzud and droughts, various diseases.
2. Retaliatory killing (overlap with livestock)
3. Mining development
4. Infrastructure (Railroads etc)

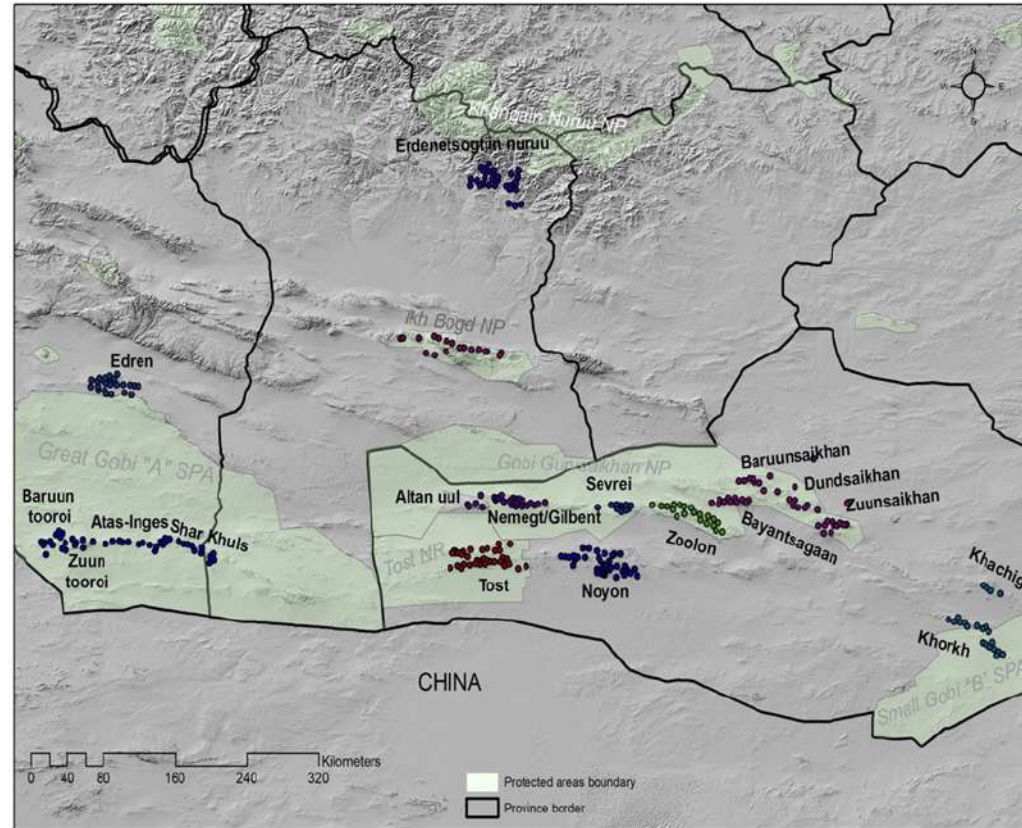


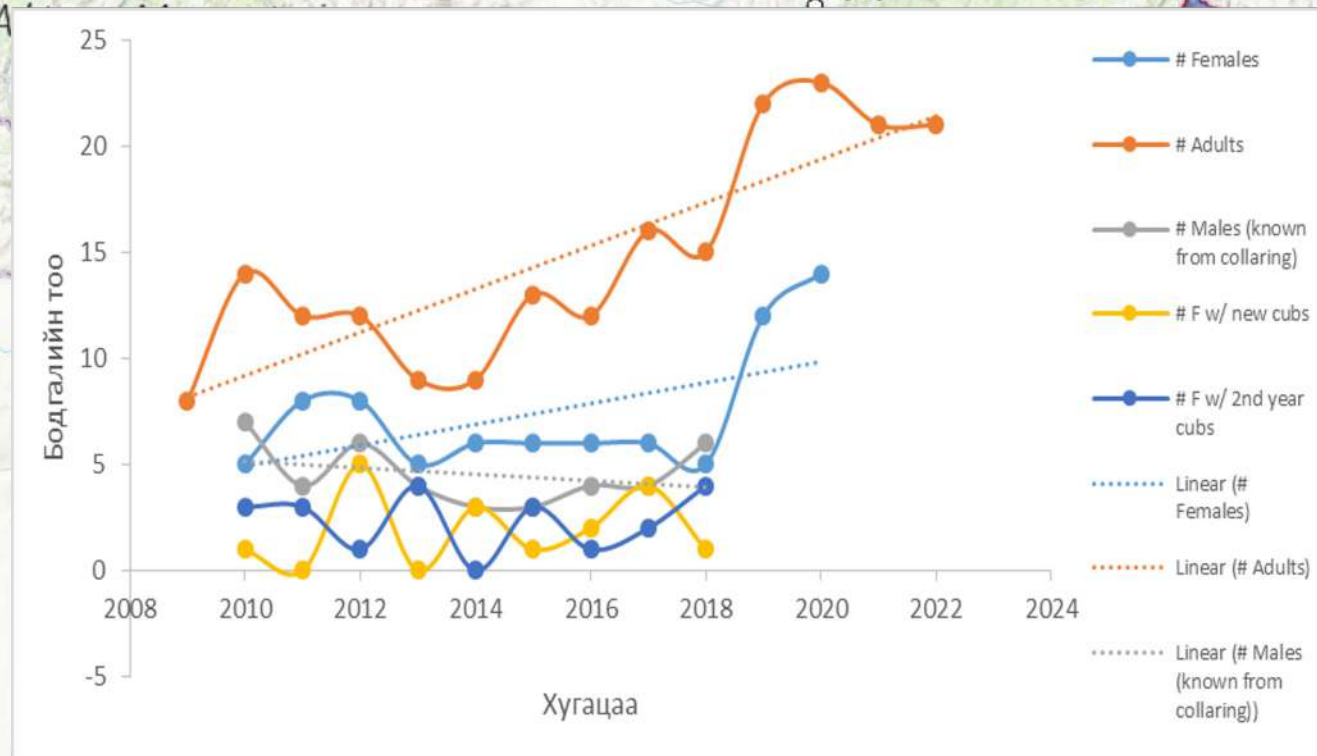
PAWS implementation in Mongolia

- SL long term ecological study (LTES) since 2008 in SGO landscape.
 - ▶ Snow leopard movement and activities/cub survival
 - ▶ Camera traps
 - ▶ Ungulate surveys
 - ▶ Distance sampling for gazella
 - ▶ Recruitment and variation in reproduction by ibex
 - ▶ Grassland ecology and the impacts of climate change, herder practices, and the cashmere trade
 - ▶ Capacity enhancement and involvement of students
- A nationwide snow leopard population distribution survey was conducted between August and November 2018. About 12 teams of 217 personnel surveyed 20x20 km 1200 grids. Related paper published in 2001.



Camera trap surveys in the Gobi Landscape

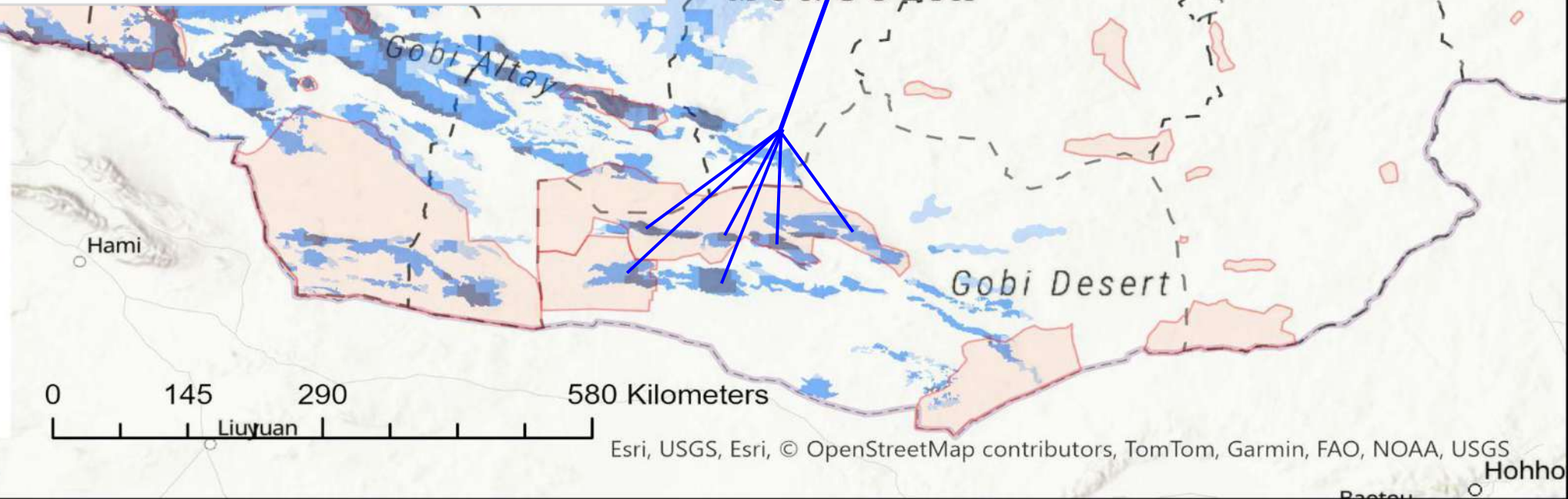




-LTES since 2008
- Camera-Trapping in South Gobi landscape

Snow Leopard Distribution

- Density**
- High
 - Medium
 - Low
 - NPA
 - Province boundary
 - Country boundary



Esri, USGS, Esri, © OpenStreetMap contributors, TomTom, Garmin, FAO, NOAA, USGS

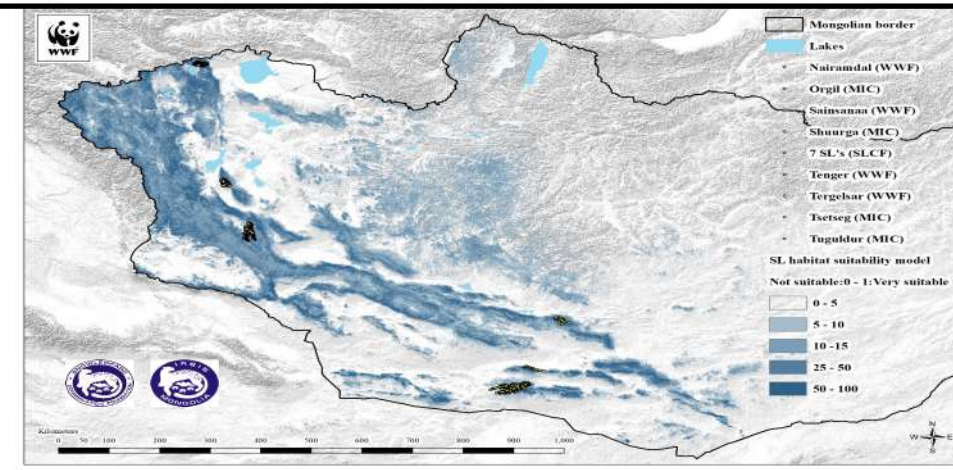
SNOW LEOPARD HABITAT MODELLING

Data from:

- WWF-Mongolia
 - SLCF
 - IMC
- Data:**
- 15 individuals
 - 26,000 locations from
 - from north, central and south Altai Mountains

RESULT

- Potential habitats revealed



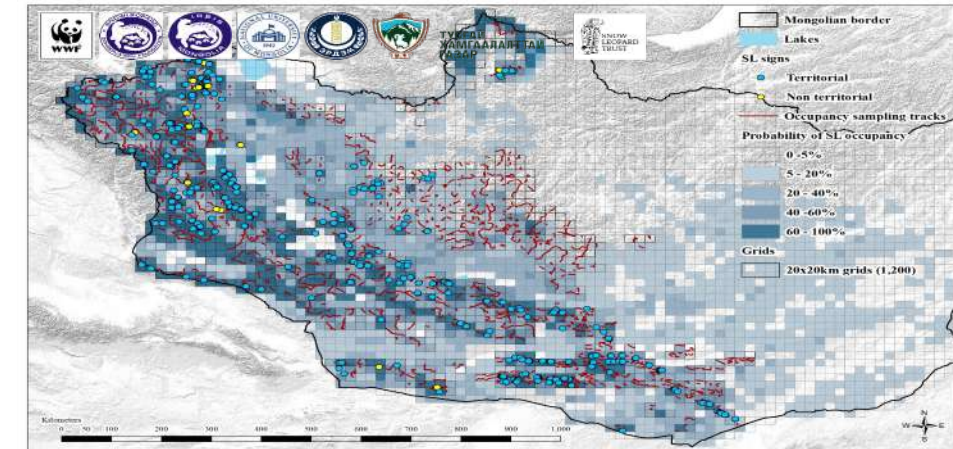
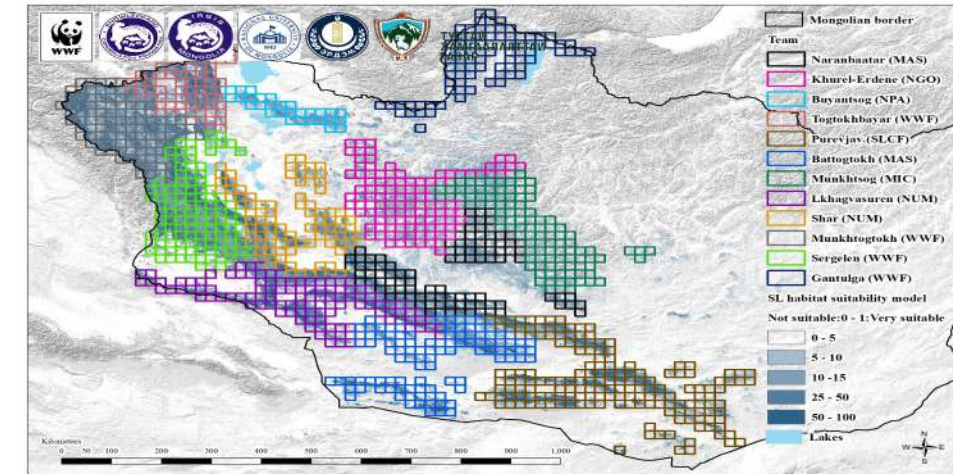
SNOW LEOPARD OCCUPANCY ESTIMATES

Completed:

- August and November 2018
- 12 teams for the field work
 - ☐ 60 researchers
 - ☐ 126 rangers and locals
 - ☐ 31 drivers, 217 personnel participated
- 1,017 grids of each 20x20 km (406,000 km² area) surveyed with 19,924 km transects for sign survey, on average 19 km long tracks for each grids,

RESULT

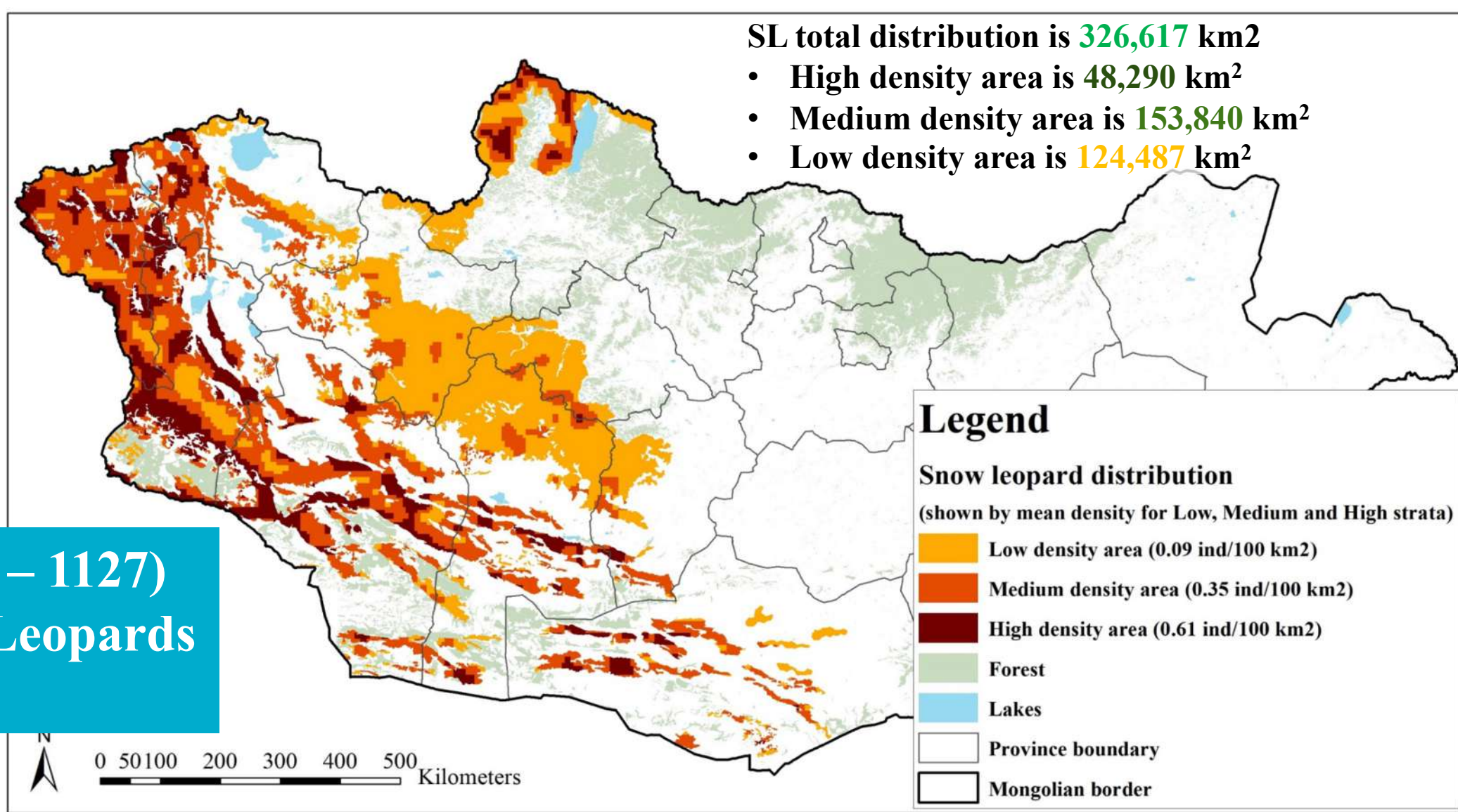
- All potential habitats were searched for SL signs
- 1,508 signs of Snow leopard found
- 1,421 signs used for the Occupancy analyses
- Calculated probability of SL occupancy for entire Mongolia



SNOW LEOPARD POPULATION and DISTRIBUTION

RESULTS

**953 (CI: 806 – 1127)
adult Snow Leopards
in Mongolia**



Next steps:

- Incorporate the remaining data from camera traps into the analysis. Increase the accuracy of the estimate. Assess the snow leopard populations at every mountain.

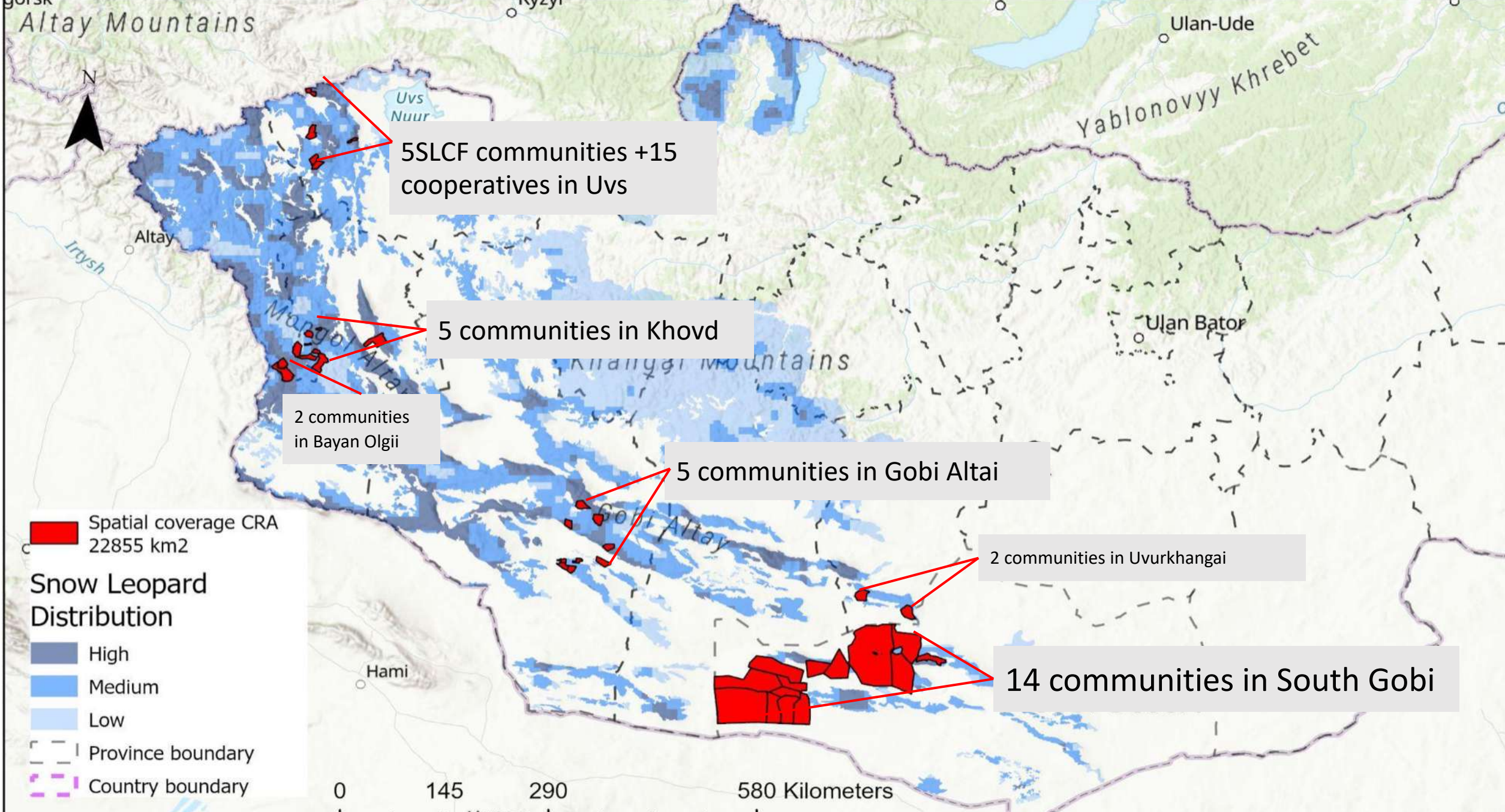
Climate Adaptations/Nature-based Solutions

Developments in climate adaptation efforts focusing on the

–Local communities

–Landscapes





Disrupting illegal wildlife trade in the country

Strengthening coordination and capacities of law enforcement agencies

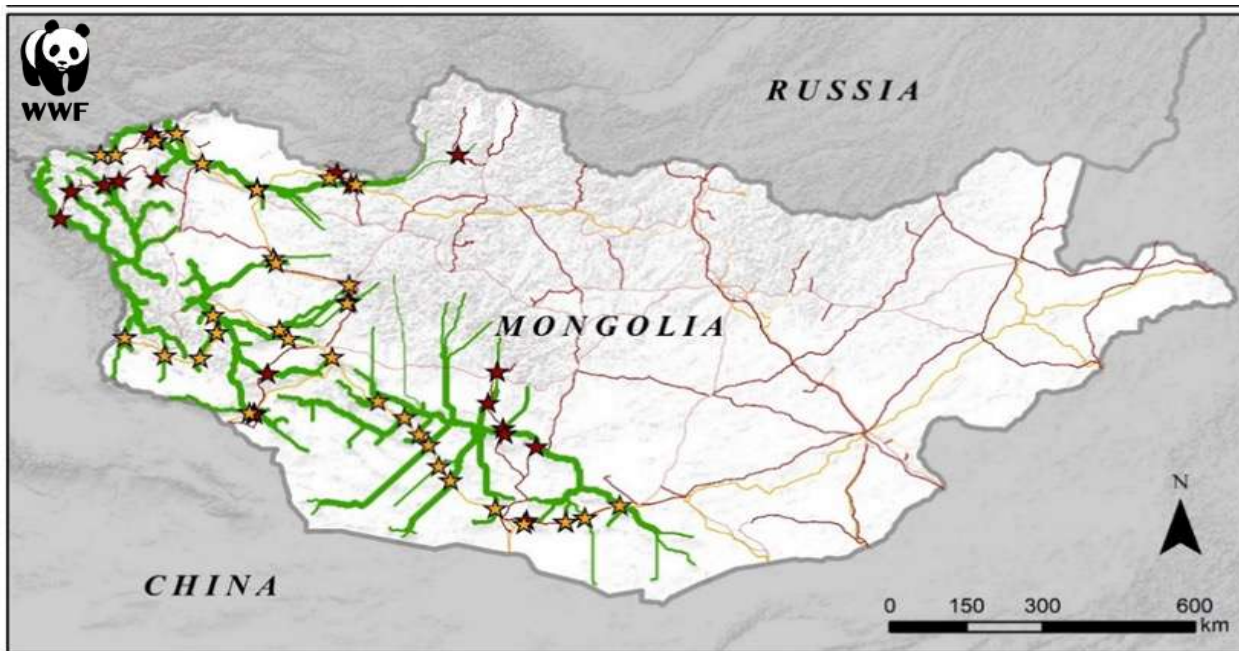
- We have been cooperating with the Coordination Council for Crime Prevention Against the Environment
- In frame of collaboration, we supported a training of around 350 law enforcement officials and combat illegal activities related to natural resources, especially in border areas in Altai-Sayan ecoregion.
- Developed and provided handouts and guidebooks to enhance capacity of Law Enforcement agencies to prevent and combat Environmental crimes.
- Notable outcomes include an 75% increase in Snow leopard related poaching case detection between 2019-2024 compared to 2013-2018 level.
- We will prepare trainers in 2024

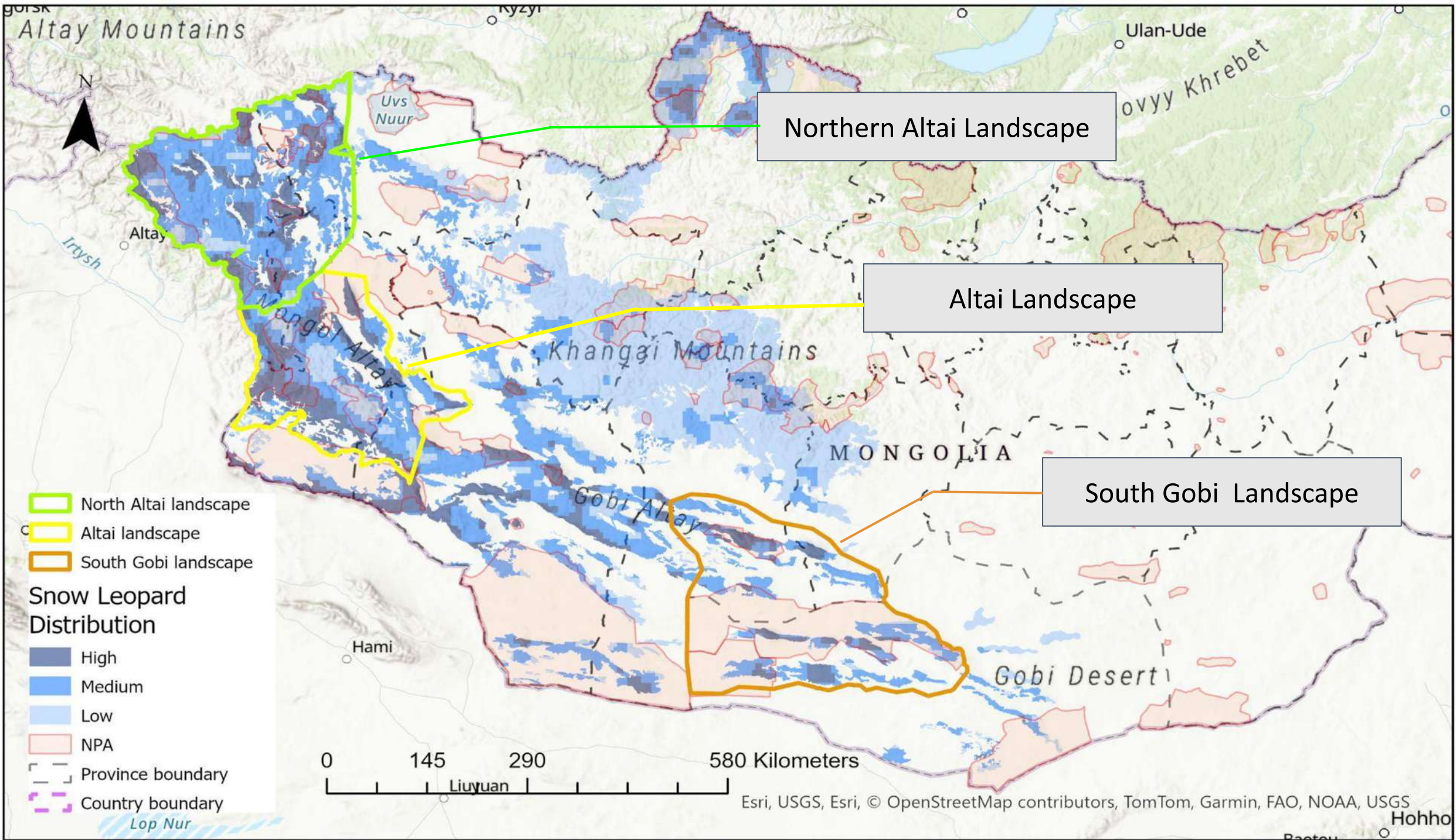


THANK YOU TO SNOW LEOPARD
TRUST & John Humphreys and
Catherine Lengyel

Managing Infrastructure/Developmental initiatives in snow leopard landscape

- A national wildlife-friendly fence standard for railroads and paved roads is being developed.
- Monitoring of recently built wildlife passages along the railroads is being conducted with the aim of improving the current two "National Wildlife Friendly Passage Standards."
- We conducted an assessment of the potential impact of linear infrastructure on animal corridors.





Altai Mountains

Ulan-Ude

Northern Altai Landscape

Altai Landscape

South Gobi Landscape

- North Altai landscape
- Altai landscape
- South Gobi landscape

Snow Leopard Distribution

- High
- Medium
- Low
- NPA

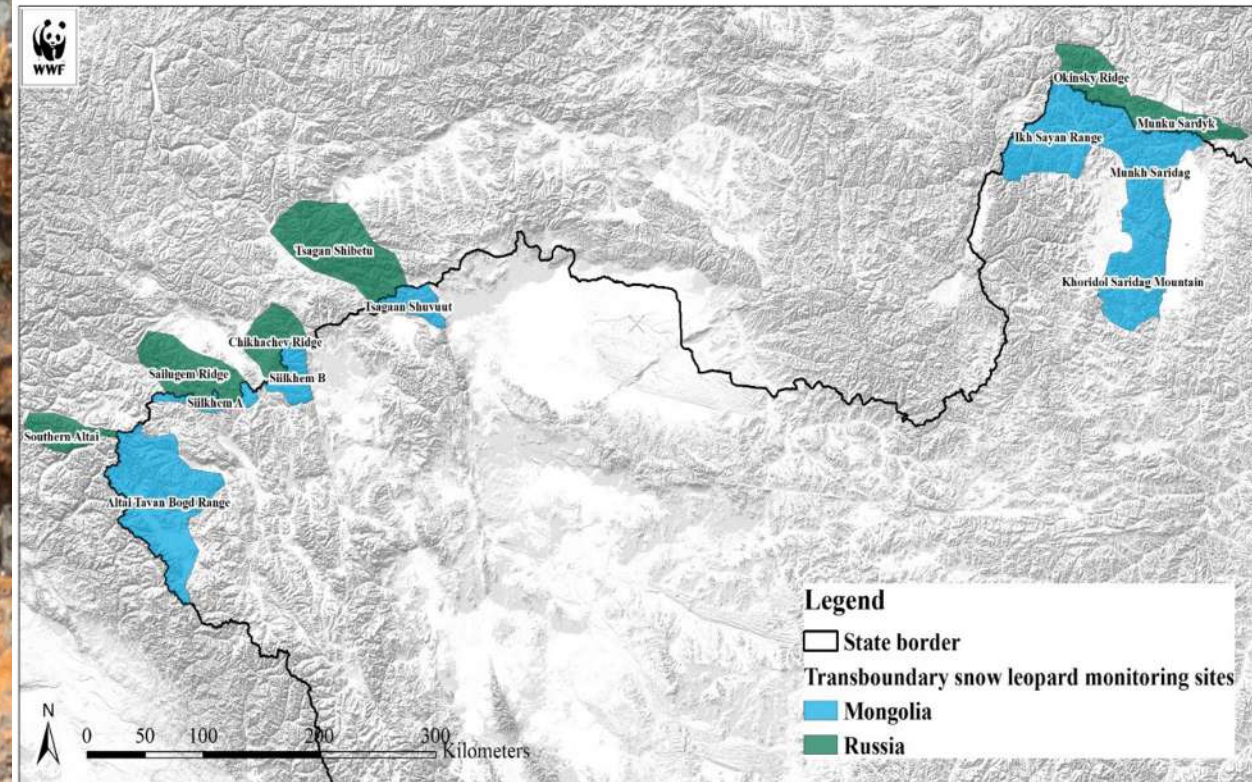
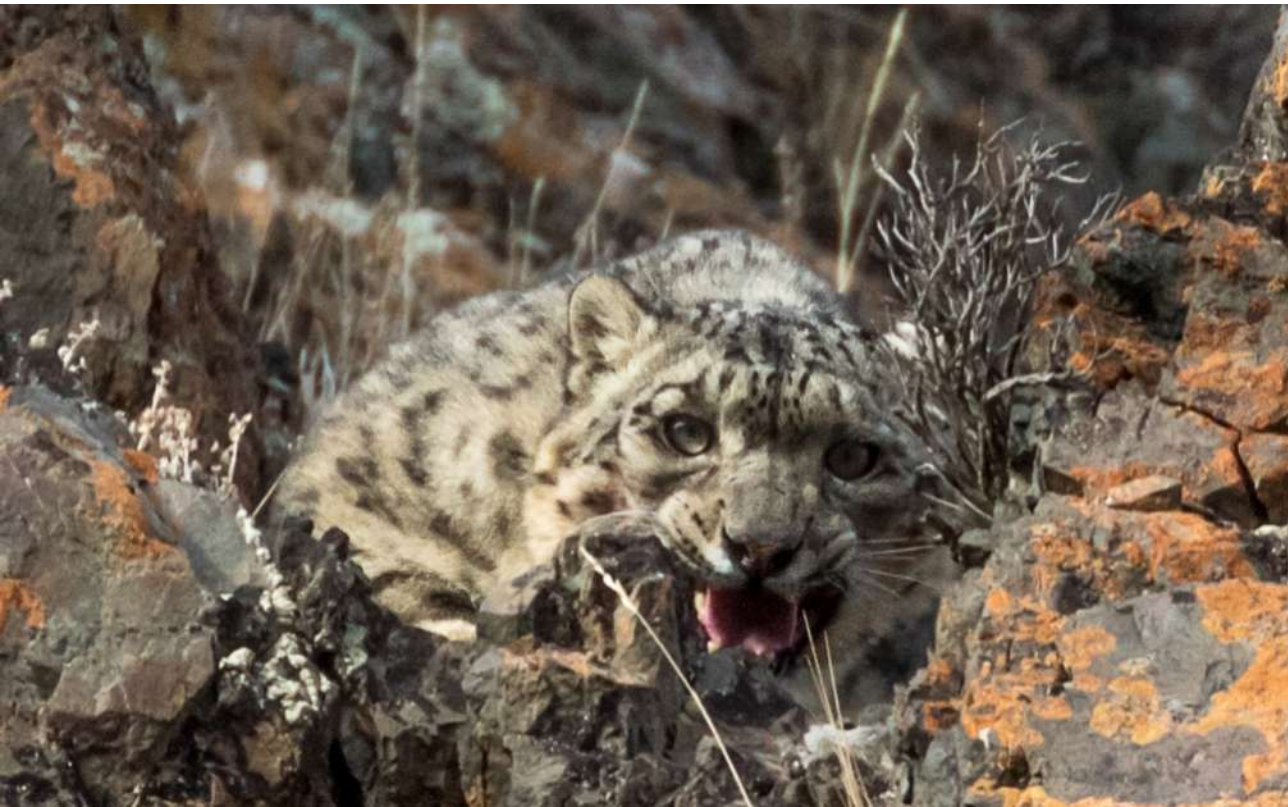
- Province boundary
- Country boundary

0 145 290 580 Kilometers

Hohho

Transboundary snow leopard monitoring program

- Implementation of program in 5 ranges in transboundary.
- Federal Republic of Germany through KFW Development Bank with Mongolian government will supply equipment and tools for transboundary monitoring.



Thanks to our collaborations in Mongolia



GLOBAL ENVIRONMENT FACILITY
INVESTING IN OUR PLANET

